

MASON-LITE

by MFI • Masonry Fireplace Industries, Inc.

Manufacturers of Modular Masonry

2024

Pricing

&

Ordering Information

Revision 12/19/2023 Effective 1/1/2024

DuraVent

GB *Golden Breeze*

VESTAL

ENERVEX
VENTING DESIGN SOLUTIONS

Phone: 951-588-6816
Toll Free: 800-345-7078
Fax: 951-588-8046

www.mason-lite.com
info@mason-lite.com

Location:
Po Box 4338
Riverside, Ca 92514

Table of Contents

Page

<u>Mason-Lite Fireplaces</u>	3
Fire Box Kits	3
Virginiana Burners	3
<u>Mason-Lite Custom Fireplaces</u>	3
<u>Mason-Lite Accessories</u>	4
Height Kit	4
Arches	4
Combustion Air Kits	4
Fireplace Tools	4
Mortar	4
Damper Blocks	4
Cast Iron Dampers	4
Metal Bases	4
<u>Mason-Lite True Fire Brick Panels</u>	5
<u>Mason-Lite Linear Firebox Kits</u>	6
Linear Vented Burners	6
<u>Mason-Lite Linear VENT FREE Firebox Kits</u>	7
Linear VENT FREE Burners	7
<u>Mason-Lite Masonry Chimney Systems</u>	8
<u>Mason-Lite Pizza Ovens</u>	8
<u>Mason-Lite Fire Features</u>	8
<u>Mason-Lite Chimney Shrouds</u>	9
<u>Architectural Clay by MFI Clay Tops</u>	9
<u>Duravent DuraChimney II (12", 14", 16")</u>	10
<u>Duravent B-Vent Pipe (10" & 12")</u>	10
<u>Energex Chimney Fans</u>	11
<u>KW Chimney Fans</u>	12

Mason-Lite Standard Fire Boxes

- Standard kits come complete with mortar, Angle Iron or T-Bar. Linear, Regal and Custom units DO NOT include angle Iron or T-Bar

Sizes listed are raw box dimensions. Finished dimensions are 3" less when lined with fire brick splits or panels. (Linear and Regal Models reflect actual finished opening)

- Fireboxes must be lined with optional brick panels or local firebrick handlaid.



Crated
Package

		<u>RETAIL</u>	<u>Crated</u>
		<u>Price/Ea</u>	<u>Weight (lbs.)</u>
MFP75	75" SEMI-CUSTOM FIREBOX KIT, Use Dual 14" Class A UL103 Chimney	\$11,248	2825
MFP63	63" FIREBOX KIT - Use 16" Class A UL103 Chimney	\$7,722	2652
MFP49	49" FIREBOX KIT - Use 14" Class A UL103 Chimney	\$5,240	1958
MFP44	44" FIREBOX KIT - Use 12" Class A UL103 Chimney	\$4,862	1757
MFP39	39" FIREBOX KIT - Use 12" Class A UL103 Chimney	\$4,488	1614
MFPST43	43" ST FIREBOX KIT - Use 16" Class A UL103 Chimney	\$5,828	1631
MFP33	33" FIREBOX KIT - Use 12" Class A UL103 Chimney	\$3,314	1337

Optional Virginiana Decorative Gas Logs (Resale Multiplier)

Electronic Ignition with remote Inc. , match light avail. upon request

			<u>Weight (lbs.)</u>
VG24-NG	24" Virginiana Decorative Gas Logs and NG Burner for use with MFP39	\$2,491	100
VG24-LP	24" Virginiana Decorative Gas Logs and LP Burner for use with MFP39	\$2,797	100
VG30-NG	30" Virginiana Decorative Gas Logs and NG Burner for use with MFP44	\$2,702	141
VG30-LP	30" Virginiana Decorative Gas Logs and LP Burner for use with MFP44	\$2,797	141
VG36-NG	36" Virginiana Decorative Gas Logs and NG Burner for use with MFP49	\$3,147	173
VG36-LP	36" Virginiana Decorative Gas Logs and LP Burner for use with MFP49	\$3,241	173
VGST30-NG	30" See Thru Virginiana Dec. Gas Logs and NG Burner for use with MFPST	\$3,477	236
VGST30-LP	30" See Thru Virginiana Dec. Gas Logs and LP Burner for use with MFPST4	\$3,571	236
VGXL48-NG	48" JUMBO Virginiana Dec. Gas Logs and NG Burner for use with MFP63	\$7,477	410
VGXL48-LP	48" JUMBO Virginiana Dec. Gas Logs and LP Burner for use with MFP63	\$7,608	410



Mason-Lite Regal Wood Burning Boxes

Must use full firebrick sourced locally, Please note instruction manual for clearance differences

T-Bar/ Angle Iron Not Included

Mason-Lite Regal Wood Burning Boxes (Standard Multiplier)

			<u>Crated</u>
			<u>Weight (lbs.)</u>
MFP72-RGL	72" x 38.5" FIREBOX KIT - Use Dual 14" Class A UL103 Chimney	\$12,934	3385
MFP84-RGL	84" x 38.5" FIREBOX KIT - Use Dual 16" Class A UL103 Chimney	\$15,091	3794
MFP96-RGL	96" x 38.5" FIREBOX KIT - Use Dual 16" Class A UL103 Chimney	\$17,246	4185
MFP108-RGL	108" x 38.5" FIREBOX KIT - Use Triple 14" Class A UL103 Chimney	\$19,402	4475
MFP120-RGL	120" x 38.5" FIREBOX KIT - Use Triple 14" Class A UL103 Chimney	\$21,558	4900

Mason-Lite Standard B-Vent Fire Boxes Gas Burning Only

T-Bar Included

Burner, Logset and Spill Switch included. Comes Standard as NG, LP avail. upon request

Gas B-Vent Firebox Kits (Standard Multiplier)

			<u>Crated</u>
			<u>Weight (lbs.)</u>
MGFPST43	12" B-VENT GAS APPLIANCE w/ 30" NG Grand Canyon Gas Logs*	\$11,886	1881
MGFP49	10" B-VENT GAS APPLIANCE w/ 39" NG Peterson Gas Logs*	\$9,969	2158
MGFP44	10" B-VENT GAS APPLIANCE w/ 30" NG Peterson Gas Logs*	\$9,165	1932
MGFP39	10" B-VENT GAS APPLIANCE w/ 24" NG Peterson Gas Logs*	\$8,672	1764



Mason-Lite Standard Vent Free Fire Boxes Gas Burning Only

T-Bar Included

Vent Free Firebox Kits (Standard Multiplier)

			<u>Crated</u>
			<u>Weight (lbs.)</u>
MFP49VF	49" VENT FREE FIREBOX KIT - use any approved VF log set	\$4,291	1608
MFP44VF	44" VENT FREE FIREBOX KIT - use any approved VF log set	\$3,859	1457
MFP39VF	39" VENT FREE FIREBOX KIT - use any approved VF log set	\$3,397	1349
MFPST43VF	43" VENT FREE ST FIREBOX KIT - use any approved VF log set	\$4,217	1314

Optional Virginiana Vent Free Gas Logs (Inc. Elect. Ignition w. Remote) (Resale Multiplier)

			<u>Weight (lbs.)</u>
VGVP24-NG	Virginiana Vent Free Gas Logs and NG Burner for use with MFP39VF	\$2,366	73
VGVP24-LP	Virginiana Vent Free Gas Logs and LP Burner for use with MFP39VF	\$2,366	73
VGVP30-NG	Virginiana Vent Free Gas Logs and NG Burner for use with MFP44VF	\$2,459	81
VGVP30-LP	Virginiana Vent Free Gas Logs and LP Burner for use with MFP44VF	\$2,459	81



Custom Mason-Lite Fireplaces Available



Design services available for custom fireplaces including linear, Rumford Style*, See Thru, 3-sided, island and corner configuration. These custom units are ready to assemble and require little to no further modification on site. Please visit Mason-Lite.com/customorder

Mason-Lite Accessories

Combustion Air Kits (Standard Multiplier)

- Includes a closable fire box inlet (that fits pre-cut hole in firebox), 3' flexible vent conduit and plastic outdoor hood
- If using panels, a hole must be cut to accommodate the air kit. See complete instructions for further information.
- Square Sided (Linear or Custom) units require a "See Thru" Airtkit.

		RETAIL Price/Ea	Weight
MFP4-AK-M	4" Combustion Air Kit -3' Flexible Vent and Metal Hood	\$336	7 lbs
MFPST-AK-M	4" Combustion Air Kit for MFPST43 AND Linear Units	\$336	7 lbs

Fireplace Tools (Standard Multiplier)

MFPT-DTP-R	Deluxe Drop Tine Fire Poker Fireplace Tool- Right Handed	\$267	5 lbs
MFPT-DTP-L	Deluxe Drop Tine Fire Poker Fireplace Tool- Left Handed	\$267	5 lbs

Masonry Arches (Standard Multiplier)

- This option must be cut to size and fitted in per installation instructions.

MFP-ARC	Masonry Arch - Fits up to and including MFP49	\$400	42 lbs
MFP-ARC63	Masonry Arch - Fits MFP63 - NON-STOCK ITEM	\$627	60 lbs

Refractory Mortar (Standard Multiplier)

MFP530	50 LBS. BUCKET DRY MORTAR	\$227	50 lbs
--------	---------------------------	-------	--------

Height Kits (Used to increase opening height by 8") (Flue size may need to be increased) (Standard Multiplier)

- Includes firebox sections to increase face height by 8"
- Be sure to check flue sizing (diameter) based on the installation parameters (i.e.. chimney height and new face dimensions) to insure proper draw.

MFP75-HK	HEIGHT KIT INCLUDES (1) MFP75-2, (1) MFP75-2A & (2) MFP75-3	\$1,366	279 lbs
MFP63-HK	HEIGHT KIT INCLUDES (1) MFP63-2, (1) MFP63-2A & (2) MFP63-3	\$1,152	255 lbs
MFP49-HK	HEIGHT KIT INCLUDES (1) MFP49-2 & (2) MFP49-3	\$682	239 lbs
MFP44-HK	HEIGHT KIT INCLUDES (1) MFP44-2 & (2) MFP44-3	\$666	228 lbs
MFP39-HK	HEIGHT KIT INCLUDES (1) MFP39-2 & (2) MFP39-3	\$638	219 lbs
MFPST43-HK	HEIGHT KIT INCLUDES (2) MFP43ST-3	\$555	162 lbs
MFP33-HK	HEIGHT KIT INCLUDES (1) MFP33-2 & (2) MFP33-3	\$605	215 lbs

Metal Bases (For use with Wood Burning Fireplaces Being Installed on a Wood Floor)(Standard Multiplier)

- For installations on combustible floors.
- Includes Insulation Blanket, All Thread, Brackets and (2) Cement Board Per Base
- Additional mounting hardware may be required depending upon the installation. (See Instructions)

		RETAIL Price/Ea	Weight
MFPB63	8" Structural Metal Base for 63" Firebox	\$2,235	219 lbs
MFPB49	6" Structural Metal Base for 49" Firebox	\$1,785	140 lbs
MFPB44	6" Structural Metal Base for 44" Firebox	\$1,510	128 lbs
MFPB43	8" Structural Metal Base for 43" See-Thru Firebox	\$1,674	115 lbs
MFPB39	6" Structural Metal Base for 39" Firebox	\$1,376	103 lbs
MFPB33	6" Structural Metal Base for 33" Firebox	\$1,212	85 lbs

Steel Throat Dampers (Designed For Mason-Lite Fireplaces) (Damper Blocks Not Necessary) (Standard Multiplier)

MFP-SD63	63" Steel Throat Damper - for MFP63 (DAMPER BLOCK - NOT NECESSARY)	\$1,478	109 lbs
MFP-SD49	49" Steel Throat Damper - for MFP49 (DAMPER BLOCK - NOT NECESSARY)	\$698	89 lbs
MFP-SD44	44" Steel Throat Damper - for MFP44 (DAMPER BLOCK - NOT NECESSARY)	\$620	82 lbs
MFP-SD39	39" Steel Throat Damper - for MFP39 (DAMPER BLOCK - NOT NECESSARY)	\$553	75 lbs
MFP-SD33	33" Steel Throat Damper - for MFP33 (DAMPER BLOCK - NOT NECESSARY)	\$487	60 lbs

Cast Iron Dampers (Standard Multiplier) (Based on Availability)

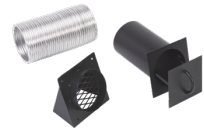
MFP-CC54	54" Cast Damper - for MFP63 (DAMPER BLOCK - MFP63 Included)	\$1,411	109 lbs
MFP-CC42	42" Cast Damper - for MFP49 (DAMPER BLOCK - MFP49 Included)	\$603	89 lbs
MFP-CC36	36" Cast Damper - for MFP44 (DAMPER BLOCK - MFP44 Included)	\$528	82 lbs
MFP-CC30	30" Cast Damper - for MFP39 (DAMPER BLOCK - MFP39 Included)	\$469	75 lbs
MFP-CC24	24" Cast Damper - for MFP33 (DAMPER BLOCK - MFP33 Included)	\$361	60 lbs

Damper Blocks (If using Mason-Lite Firebrick Panels, Damper Blocks are not needed) (Standard Multiplier)

MFPDS63	Damper Block for MFP63	\$185	57 lbs
MFPDS49	Damper Block for MFP49	\$159	44 lbs
MFPDS44	Damper Block for MFP44	\$142	40 lbs
MFPDS39	Damper Block for MFP39	\$123	36 lbs
MFPDS33	Damper Block for MFP33	\$105	31 lbs

PureBurn EPA Phase II Qualified Burner (Standard Multiplier)

QWBN-44	PUREBURN GRATE/BURNER SET (Natural Gas) (for MFP44 and MFP49)	\$2,599	18 lbs
QWBP-44	PUREBURN GRATE/BURNER SET (Propane) (for MFP44 and MFP49)	\$2,599	18 lbs
QWBN-33	PUREBURN GRATE/BURNER SET (Natural Gas) (for MFP33 and MFP39)	\$1,948	14 lbs
QWBP-33	PUREBURN GRATE/BURNER SET (Propane) (for MFP33 and MFP39)	\$1,948	14 lbs
QWBN-63	PUREBURN GRATE/BURNER SET (Natural Gas) (for MFP63)	\$3,720	26 lbs
QWBP-63	PUREBURN GRATE/BURNER SET (Propane) (for MFP63)	\$3,720	26 lbs
QWB-EI	ELECTRONIC IGNITION FOR USE WITH PUREBURN UNITS	\$562	3 lbs



Mason-Lite Real Brick Panels & Fire Brick

- Made with real fire brick.

- Panels are available for fire boxes ordered with the optional height kit. Add 20 % to price. Designate extended height panels by adding -X to the part number (ex. MFP39SHBL-X). Extended panels only available for use with one height extension.

- Panels come standard in Gold Color. (Original Buff Color). Panels also available in Cream and Black. Designate Cream brick by adding -C to the part number (ex. MFP39SHBL-C).

Designate Black brick by adding -B to the part number (ex. MFP39SHBL-B)

- Brick Panels not available for Linear or Regal models

(Color may vary between sets) (Not available for MFP75) (Standard Color is Gold)

Split Herringbone Brick Panels (Brick Size Approx. 2.25" x 9") (Standard Multiplier)

		RETAIL Price/Ea	Weight
MFP63SHBL-G	Herringbone Brick Panels for 63" FP	\$4,255	563 lbs
MFP49SHBL-G	Herringbone Brick Panels for 49" FP	\$2,892	474 lbs
MFP44SHBL-G	Herringbone Brick Panels for 44" FP	\$2,757	418 lbs
MFP39SHBL-G	Herringbone Brick Panels for 39" FP	\$2,599	395 lbs
MFP33SHBL-G	Herringbone Brick Panels for 33" FP	\$2,326	334 lbs
MFPST43SHBL-G	Herringbone Brick Panel for 43" See-Thru FP	\$2,892	412 lbs



Split Herringbone

Split Running Bond Brick Panels (Brick Size Approx. 2.25" x 9") (Standard Multiplier)

MFP63SRBL-G	Split Running Bond Brick Panels for 63" FP	\$4,255	563 lbs
MFP49SRBL-G	Split Running Bond Brick Panels for 49" FP	\$2,892	474 lbs
MFP44SRBL-G	Split Running Bond Brick Panels for 44" FP	\$2,757	418 lbs
MFP39SRBL-G	Split Running Bond Brick Panels for 39" FP	\$2,599	395 lbs
MFP33SRBL-G	Split Running Bond Brick Panels for 33" FP	\$2,326	334 lbs
MFPST43SRBL-G	Split Running Bond Brick Panel for 43" See-Thru FP	\$2,892	412 lbs



Split Running Bond
(shown in Black)

Full Running Bond Brick Panels (Brick Size Approx. 4.5" x 9") (Standard Multiplier)

MFP63FRBL-G	Full Running Bond Brick Panels for 63" FP	\$3,993	602 lbs
MFP49FRBL-G	Full Running Bond Brick Panels for 49" FP	\$2,599	498 lbs
MFP44FRBL-G	Full Running Bond Brick Panels for 44" FP	\$2,496	448 lbs
MFP39FRBL-G	Full Running Bond Brick Panels for 39" FP	\$2,363	430 lbs
MFP33FRBL-G	Full Running Bond Brick Panels for 33" FP	\$2,122	364 lbs
MFPST43FRBL-G	Full Running Bond Brick Panel for 43" See-Thru FP	\$2,599	414 lbs

Cream and Black Colors also available. See above for details.



Full Running Bond

EXTENDED Split Herringbone Brick Panels (Brick Size Approx. 2.25" x 9") (Standard Multiplier)

		RETAIL Price/Ea	Weight
MFP63SHBL-G-X	8" Extended Herringbone Brick Panels for 63" Fireplace w. Height Kit	\$5,105	676 lbs
MFP49SHBL-G-X	8" Extended Herringbone Brick Panels for 49" Fireplace w. Height Kit	\$3,470	569 lbs
MFP44SHBL-G-X	8" Extended Herringbone Brick Panels for 44" Fireplace w. Height Kit	\$3,308	502 lbs
MFP39SHBL-G-X	8" Extended Herringbone Brick Panels for 39" Fireplace w. Height Kit	\$3,119	474 lbs
MFP33SHBL-G-X	8" Extended Herringbone Brick Panels for 33" Fireplace w. Height Kit	\$2,791	401 lbs
MFPST43SHBL-G-X	8" Extended Herringbone Brick Panels for 43" See Thru Fireplace w. H	\$3,470	494 lbs



Split Herringbone

EXTENDED Split Running Bond Brick Panels (Brick Size Approx. 2.25" x 9") (Standard Multiplier)

MFP63SRBL-G-X	8" Extended Split Running Bond Brick Panels for 63" FP w. Height Kit	\$5,105	676 lbs
MFP49SRBL-G-X	8" Extended Split Running Bond Brick Panels for 49" FP w. Height Kit	\$3,470	569 lbs
MFP44SRBL-G-X	8" Extended Split Running Bond Brick Panels for 44" FP w. Height Kit	\$3,308	502 lbs
MFP39SRBL-G-X	8" Extended Split Running Bond Brick Panels for 39" FP w. Height Kit	\$3,119	474 lbs
MFP33SRBL-G-X	8" Extended Split Running Bond Brick Panels for 33" FP w. Height Kit	\$2,791	401 lbs
MFPST43SRBL-G-X	8" Extended Split Running Bond Brick Panel for 43" See-Thru FP w. H	\$3,470	494 lbs



Split Running Bond
(shown in Black)

EXTENDED Full Running Bond Brick Panels (Brick Size Approx. 4.5" x 9") (Standard Multiplier)

MFP63FRBL-G-X	8" Extended Full Running Bond Brick Panels for 63" FP w. Height Kit	\$4,792	722 lbs
MFP49FRBL-G-X	8" Extended Full Running Bond Brick Panels for 49" FP w. Height Kit	\$3,119	598 lbs
MFP44FRBL-G-X	8" Extended Full Running Bond Brick Panels for 44" FP w. Height Kit	\$2,995	538 lbs
MFP39FRBL-G-X	8" Extended Full Running Bond Brick Panels for 39" FP w. Height Kit	\$2,836	516 lbs
MFP33FRBL-G-X	8" Extended Full Running Bond Brick Panels for 33" FP w. Height Kit	\$2,547	436 lbs
MFPST43FRBL-G-X	8" Extended Full Running Bond Brick Panel for 43" See-Thru FP w. He	\$3,119	496 lbs

Extended Cream and Black Colors also available. See above for details.



Full Running Bond

Mason-Lite Firebrick by the Pallet

Firebrick by the Pallet (Color may vary between sets) (Standard Multiplier)

NOTE: Split size is not the same size as the brick in "split" brick panels above

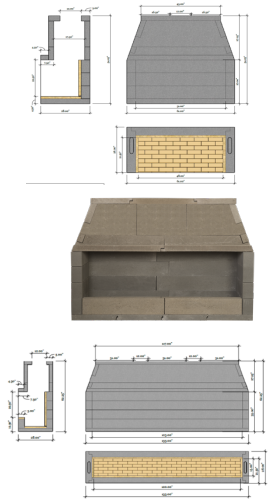
		RETAIL Price/Ea	Weight Approx.
MFP-FBPT-G	Pallet of 332 Gold Full Sized Firebrick (Approx. 4.5" x 9" x 2.5" Brick Size)	\$4,841	2698 lbs
MFP-SBPT-G	Pallet of 664 Gold Split Sized Firebrick (Approx. 4.5" x 9" x 1.25" Brick Size)	\$6,677	2699 lbs
MFP-FBPT-B	Pallet of 336 Black Full Sized Firebrick (Approx. 4.5" x 9" x 2.5" Brick Size)	\$4,841	2700 lbs
MFP-SBPT-B	Pallet of 648 Black Split Sized Firebrick (Approx. 4.5" x 9" x 1.25" Brick Size)	\$6,677	2700 lbs
MFP-FBPT-C	Pallet of 304 Cream Full Sized Firebrick (Approx. 4.5" x 9" x 2.5" Brick Size)	\$4,841	2700 lbs
MFP-SBPT-C	Pallet of 664 Cream Split Sized Firebrick (Approx. 4.5" x 9" x 1.25" Brick Size)	\$6,677	2700 lbs

Mason-Lite Linear Fireboxes & Burners

Mason Lite is here to meet your linear burner needs. We have designed our "Trough" models to conceal either our Opalescence Linear burner with LED light combo or Golden Blount's Alpine burner for a sleek and sophisticated look.. For applications that require more burner flexibility, we offer the "No Trough" models. These models will accept traditional "H" Burners and Logsets.

Linear B-Vent Firebox Kits (Use MFPST-AK if Outside Airtight is needed) (Standard Multiplier)

		RETAIL	Crated Weight
LMFP36-NT	36" LINEAR GAS FIREPLACE (NO TROUGH) - 12" B-VENT	\$6,914	1758
LMFP48-NT	48" LINEAR GAS FIREPLACE (NO TROUGH) - 12" B-VENT	\$8,548	2056
LMFP60-NT	60" LINEAR GAS FIREPLACE (NO TROUGH) - 12" B-VENT	\$9,668	2293
LMFP72-NT	72" LINEAR GAS FIREPLACE (NO TROUGH) - 12" B-VENT	\$14,228	2633
LMFP84-NT	84" LINEAR GAS FIREPLACE (NO TROUGH) - 12" B-VENT	\$16,202	3030
LMFP96-NT	96" LINEAR GAS FIREPLACE (NO TROUGH) - Dual 12" B-VENT	\$18,061	3204
LMFP108-NT	108" LINEAR GAS FIREPLACE (NO TROUGH) - Dual 12" B-VENT	\$19,778	3440
LMFP120-NT	120" LINEAR GAS FIREPLACE (NO TROUGH) - Dual 12" B-VENT	\$21,309	3805
LMFP36	36" LINEAR GAS FIREPLACE - 12" B-VENT (with Burner Trough)	\$7,681	2134
LMFP48	48" LINEAR GAS FIREPLACE - 12" B-VENT (with Burner Trough)	\$9,496	2324
LMFP60	60" LINEAR GAS FIREPLACE - 12" B-VENT (with Burner Trough)	\$10,742	2757
LMFP72	72" LINEAR GAS FIREPLACE - 12" B-VENT (with Burner Trough)	\$15,809	3109
LMFP84	84" LINEAR GAS FIREPLACE - 12" B-VENT (with Burner Trough)	\$18,003	3344
LMFP96	96" LINEAR GAS FIREPLACE - Dual 12" B-VENT (with Burner Trough)	\$20,068	3699
LMFP108	108" LINEAR GAS FIREPLACE - Dual 12" B-VENT (with Burner Trough)	\$21,975	4118
LMFP120	120" LINEAR GAS FIREPLACE - Dual 12" B-VENT (with Burner Trough)	\$23,676	4565



Opalescence Linear Burners (For use with Linear Units with Burner Trough) (Resale Multiplier)

LMBXXL-EN Includes Case, Burner, S.I.T. Controls w/Remote, LED Lights w/Remote, Rating Plate, Installation Manual, Flex-line and Fittings

(Comes standard as Natural Gas please add EP for Propane or LP)

		RETAIL	Weight
LMB36L-EN	36" Linear Drop-In Burner with LED Lights, For use with LMFP36	\$3,158	N/A
LMB48L-EN	48" Linear Drop-In Burner with LED Lights, For use with LMFP48	\$3,444	N/A
LMB60L-EN	60" Linear Drop-In Burner with LED Lights, For use with LMFP60	\$3,587	N/A
LMB72L-EN	72" Linear Drop-In Burner with LED Lights, For use with LMFP72	\$4,024	N/A
LMB84L-EN	84" Linear Drop-In Burner with LED Lights, For use with LMFP84	\$4,167	N/A
LMB96L-EN	96" Linear Drop-In Burner with LED Lights, For use with LMFP96	\$4,310	N/A
OPS48-LOGS	48" Driftwood Linear 9 PCS- LOGS ONLY	\$524	45
OPS60-LOGS	60" Driftwood Linear 11 PCS- LOGS ONLY	\$773	73
OPS72-LOGS	72" Driftwood Linear 13 PCS- LOGS ONLY	\$855	81
OPS84-LOGS	84" Driftwood Linear 16 PCS- LOGS ONLY	\$1,054	101
OPS96-LOGS	96" Driftwood Linear 18 PCS- LOGS ONLY	\$1,245	125
OPS-GLS-CL	1/2" Clear Reflective Fireglass 5 Lbs. (Min. 15 Lb order)	\$27	5



Alpine Linear Burners (For use with Linear Units w/ Burner Trough ; Includes Sky Tech Hi/Lo Remote) (Resale Multiplier)

		RETAIL	Weight
ALB30N-STP	30" Alpine Natural Gas Linear Burner (Spark-to-Pilot) (For LMFP36)	\$2,353	N/A
ALB30L-STP	30" Alpine Propane Linear Burner (Spark-to-Pilot) (For LMFP36)	\$2,353	N/A
ALB42N-STP	42" Alpine Natural Gas Linear Burner (Spark-to-Pilot) (For LMFP48)	\$2,935	N/A
ALB42L-STP	42" Alpine Propane Linear Burner (Spark-to-Pilot) (For LMFP48)	\$2,935	N/A
ALB48N-STP	48" Alpine Natural Gas Linear Burner (Spark-to-Pilot) (For LMFP60)	\$3,046	N/A
ALB48L-STP	48" Alpine Propane Linear Burner (Spark-to-Pilot) (For LMFP60)	\$3,046	N/A
ALB60N-STP	60" Alpine Natural Gas Linear Burner (Spark-to-Pilot) (For LMFP72)	\$3,180	N/A
ALB60L-STP	60" Alpine Propane Linear Burner (Spark-to-Pilot) (For LMFP72)	\$3,180	N/A
ALB72N-STP	72" Alpine Natural Gas Linear Burner (Spark-to-Pilot) (For LMFP84)	\$4,501	N/A
ALB72L-STP	72" Alpine Propane Linear Burner (Spark-to-Pilot) (For LMFP84)	\$4,501	N/A
ALB84N-STP	84" Alpine Natural Gas Linear Burner (Spark-to-Pilot) (For LMFP96)	\$5,575	N/A
ALB84L-STP	84" Alpine Propane Linear Burner (Spark-to-Pilot) (For LMFP96)	\$5,575	N/A
ALB96N-STP	96" Alpine Natural Gas Linear Burner (Spark-to-Pilot) (For LMFP108)	\$5,798	N/A
ALB96L-STP	96" Alpine Propane Linear Burner (Spark-to-Pilot) (For LMFP108)	\$5,798	N/A
ALB108N-STP	108" Alpine Natural Gas Linear Burner (Spark-to-Pilot) (For LMFP120)	\$5,799	N/A
ALB108L-STP	108" Alpine Propane Linear Burner (Spark-to-Pilot) (For LMFP120)	\$5,799	N/A



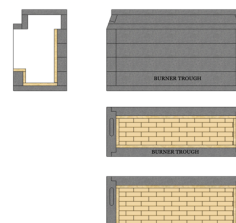
Mason-Lite Linear VENT FREE Fireboxes & Burners

Mason Lite is here to meet your Linear Vent Free burner needs. We have designed our models to with a trough conceal our Opalescence Linear Vent Free burner with LED light combo.

Linear Vent Free Firebox Kits (Standard Multiplier)

(Use MFPST-AK if Outside Airkits is needed)

		RETAIL	Crated Weight
LMFP24-VF	24" LINEAR VENT FREE GAS FIREPLACE (with Burner Trough)	\$4,341	1547
LMFP36-VF	36" LINEAR VENT FREE GAS FIREPLACE (with Burner Trough)	\$5,665	1895
LMFP48-VF	48" LINEAR VENT FREE GAS FIREPLACE (with Burner Trough)	\$7,019	2056
LMFP60-VF	60" LINEAR VENT FREE GAS FIREPLACE (with Burner Trough)	\$7,943	2464



Opalescence Linear Vent Free Burners (Resale Multiplier)

(For use with Linear VF Units with Burner Trough)

VFLDBXXL Includes Case, Burner, S.I.T. Controls w/Remote, LED Lights

w/Remote, Rating Plate, Installation Manual, Flex line and fittings

(Comes standard as Natural Gas please replace "EN" with "EP" for Propane LP)

		RETAIL	Weight
VFLDB24L-EN	24" Linear Drop-In Burner with LED Lights, For use with LMFP24-VF	\$3,066	N/A
VFLDB36L-EN	36" Linear Drop-In Burner with LED Lights, For use with LMFP36-VF	\$3,158	N/A
VFLDB48L-EN	48" Linear Drop-In Burner with LED Lights, For use with LMFP48-VF	\$3,444	N/A
VFLDB60L-EN	60" Linear Drop-In Burner with LED Lights, For use with LMFP60-VF	\$3,587	N/A
OPS-GLS-CL	1/2" Clear Reflective Fireglass 5 Lbs. (Min. 15 Lb order)	\$27	5



Chimney Systems/Components for *Mason-Lite*

- Mason-Lite refractory chimney system may be used on MFP33, MFP39, MFP44 and MFP49 with a max. syst. of 30' without add. supp.
- The MFPST43, MFP63 or and MFP75 would need to be ordered specially to use dual 14" Mas. Chim. and would have a max. syst. of 20'

Mason-Lite Masonry Chimney System Kits (Standard Multiplier)

RETAIL

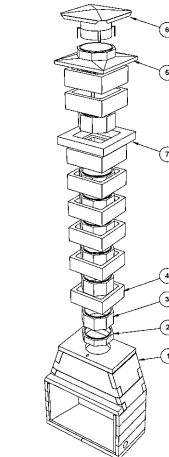
Weight

- MCLS-814K 8' System includes MCL-414 (1 ea.), MCL-814 (12 ea.), MCS-814 (12 ea.) & 50 lb. refractory mortar.
- MCLS-814P 4' System includes MCL-414 (1 ea.), MCL-814 (6 ea.), MCS-814 (6 ea.) & 50 lb. refractory mortar.

MCLS-814-16K	Mason-Lite 16' System	\$2,918	2410 lbs
MCLS-814K	Mason-Lite 8' System	\$1,612	1225 lbs
MCLS-814P	Mason-Lite 4' Patio System	\$1,079	731 lbs

Mason-Lite Masonry Chimney Individual Components (Standard Multiplier)

MCL-814	Inner Liner (Individual) 14" ID x 8" H	\$64	32 lbs
MCS-814	Outer Liner (Individual) 8" H	\$78	61 lbs
MCL-414	Inner Liner Starter (Individual) 14" ID x 4" H	\$46	14 lbs
MCSBL-814	Brick Ledge 4" H - NON-STOCK	\$335	72 lbs
MCSOS-814	Offset Elbow (30 Degrees) 14" ID x 4" H	\$215	90 lbs
MCL-CAP	Mason-Lite Chimney Cap	\$256	12 lbs
MCL-CAP-SS	Mason-Lite Chimney Cap Stainless Steel	\$373	8 lbs
MCL-CAP-C	Mason-Lite Chimney Cap Copper	\$1,154	8 lbs
MCS-CWN	Mason-Lite Chimney Crown	\$525	95 lbs
MC14-AP	14" ANCHOR PLATE/DAMPER - USE WITH MAS. CHIM. ONLY	\$355	15 lbs



Mason-Lite Pizza Ovens

Mason-Lite Masonry Pizza Oven (Standard Multiplier)

RETAIL

Weight

MPO-18	18" Toscana Pizza Oven - Inc. 16" Mas. Chim., Firebrick Panels	\$2,703	625 lbs
MPO-18WS	Toscana Pizza Oven Wood Storage	\$2,123	588 lbs
MPO-18D	Toscana Pizza Oven Door	\$953	18 lbs
MPO-24	24" Toscana Golia Pizza Oven - Inc. 16" Mas. Chim., Firebrick Panels	\$6,036	1699 lbs
MPO-24WS	Toscana Golia Oven Wood Storage	\$3,875	1161 lbs
MPO-24D	Toscana Golia Pizza Oven Door	\$1,517	35 lbs



Mason-Lite Fire Features

Mason-Lite Square Fire Features (Standard Multiplier)

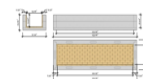
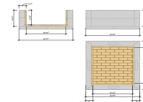
RETAIL

Weight

FFS36	36" Square Fire Feature	\$1,326	TBD
FFS42	42" Square Fire Feature	\$1,663	TBD
FFS48	48" Square Fire Feature	\$1,999	TBD

Mason-Lite Linear Fire Features (Standard Multiplier)

FFL36	36" Linear Fire Feature	\$1,394	TBD
FFL48	48" Linear Fire Feature	\$1,730	TBD
FFL60	60" Linear Fire Feature	\$2,166	TBD
FFL72	72" Linear Fire Feature	\$2,603	TBD
FFL96	96" Linear Fire Feature	\$3,476	TBD
FFL120	120" Linear Fire Feature	\$4,349	TBD



Fire Feature Brick Panels and Caps Coming Soon

Architectural Clay Tops by MFI

Architectural Clay Pots for Mason-Lite Firebox (Resale Multiplier)

Come Standard in Terra Cotta color also available in Salt, Black, Brown, Gray, Buff Clay for additional \$150

Pot Tops available for additional charge (Available in Stainless Steel and Copper) Additional \$50 for color top

See Brochure for sizing

1410	St Augustine	\$1,118	110 lbs
1429	Lexington	\$1,428	153 lbs
1433	Plymouth 21	\$1,154	92 lbs
1434	Plymouth 31	\$1,407	130 lbs
1427	Monticello	\$895	68 lbs
1432	Chesapeake 21	\$976	115 lbs
1430	Chesapeake 31	\$1,344	157 lbs
1438	Bristol	\$1,009	102 lbs
1472	Princeton 33	\$1,504	147 lbs
1472E	Burlington 33	\$1,663	163 lbs
1477	Burlington 45	\$2,741	288 lbs
1477T	Burlington 60	\$3,030	334 lbs
1481	Hampton 21 - Brushed	\$880	95 lbs
1489	Hampton 21 - Smooth Finish	\$880	95 lbs
1480	Hampton 31 - Brushed	\$1,055	142 lbs
1490	Hampton 31 - Smooth Finish	\$1,055	142 lbs
1478	Hampton XL26 - Brushed	\$1,519	223 lbs
1478PL	Hampton XL26 - Smooth Finish	\$1,519	223 lbs



Mason-Lite Premium Chimney Shrouds

Mason Lite's Decorative steel and copper chimney pots offer an alternative to unsightly factory flue caps and terminations. Available in 4 designs and in 4 colors of painted Kynar steel or in solid 16 oz. Copper, Mason Lite offers a chimney pot for any exterior.

Mason-Lite Chimney Shrouds - Dover (20" x 20" I.D. & 36" height) (Resale Multiplier)		RTAIL Price/Ea	Weight
SHDP6- NC	Dover Chimney Shroud - Natural Copper	\$2,175	200 lbs
SHDP6-MB	Dover Chimney Shroud - Matte Black	\$1,416	200 lbs
SHDP6-DB	Dover Chimney Shroud - Dark Bronze	\$1,416	200 lbs
SHDP6-SG	Dover Chimney Shroud - Storm Grey	\$1,416	200 lbs

Freight: \$250 for first, \$50 for each additional (Commercial Address, Continental US)(ADD \$100 FOR RESIDENTIAL)

Mason-Lite Chimney Shrouds - Sussex (20" I.D. & 40" height) (Resale Multiplier)		Price/Ea	Weight
SHDP8-NC	Sussex Chimney Shroud - Natural Copper	\$2,175	200 lbs
SHDP8-MB	Sussex Chimney Shroud - Matte Black	\$1,416	200 lbs
SHDP8-DB	Sussex Chimney Shroud - Dark Bronze	\$1,416	200 lbs
SHDP8-SG	Sussex Chimney Shroud - Storm Grey	\$1,416	200 lbs

Freight: \$250 for first, \$50 for each additional (Commercial Address, Continental US)(ADD \$100 FOR RESIDENTIAL)

Mason-Lite Chimney Shrouds - Charleston (20" I.D. & 40" height) (Resale Multiplier)		Price/Ea	Weight
SHDP9	Charleston Style Chimney Shroud - Natural Copper	\$2,175	200 lbs
SHDP9	Charleston Style Chimney Shroud - Matte Black	\$1,416	200 lbs
SHDP9	Charleston Style Chimney Shroud - Dark Bronze	\$1,416	200 lbs
SHDP9	Charleston Style Chimney Shroud - Storm Grey	\$1,416	200 lbs

Freight: \$250 for first, \$50 for each additional (Commercial Address, Continental US)(ADD \$100 FOR RESIDENTIAL)

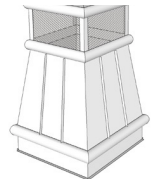
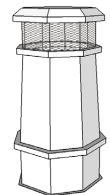
Mason-Lite Chimney Shrouds - Arlington (20" x 20" I.D. & 32" height) (Resale Multiplier)		Price/Ea	Weight
SHDP10	Arlington Chimney Shroud - Natural Copper	\$2,175	200 lbs
SHDP10	Arlington Chimney Shroud - Matte Black	\$1,416	200 lbs
SHDP10	Arlington Chimney Shroud - Dark Bronze	\$1,416	200 lbs
SHDP10	Arlington Chimney Shroud - Storm Grey	\$1,416	200 lbs

Freight: \$250 for first, \$50 for each additional (Commercial Address, Continental US)(ADD \$100 FOR RESIDENTIAL)

Mason-Lite Chimney Shrouds - Accessories (Resale Multiplier)

Needs to be Ordered with Shroud and Shipped Assembled to Shroud

		Price/Ea	Weight
SHDPA12	12" Adapter	\$288	20 lbs
SHDPA14	14" Adapter	\$288	20 lbs
SHDPA16	16" Adapter	\$288	20 lbs



Class A Air-Cooled Chimney System for Masonry Fireplaces

12" Pipe & Acc. -For use w/ MFP44, MFP39, MFP33, & Custom Units (Resale Multiplier)

		RETAIL Price/Ea	Weight
12DCA-16K	16 Foot Chimney Package	\$3,464	136 lbs
12DCA-24K	24 Foot Chimney Package	\$4,144	184 lbs
<i>*System height includes 5' for standard Mason-lite fireplace</i>			
-16 ft. system (2 x XXDCA-48, 1 x XXDCA-36), -APD, -IS, -RRS, -VC, -FS and -SC*			
-24 ft. system (4 x 12DCA-48, 1 x 12DCA-36), -APD, -IS, -RRS, -VC, -FS and -SC*			
12DCA-12	12" Chimney Pipe	\$159	10 lbs
12DCA-18	18" Chimney Pipe	\$189	10 lbs
12DCA-36	36" Chimney Pipe	\$290	21 lbs
12DCA-48	48" Chimney Pipe	\$340	24 lbs
12DCA-AP	Anchor Plate	\$468	12 lbs
12DCA-APD	Anchor Plate w/ Damper	\$792	27 lbs
12DCA-CTF	Chase Top Flashing*	\$390	4 lbs
12DCA-E15	15 Deg. Elbow	\$318	9 lbs
12DCA-E30	30 Deg. Elbow	\$318	9 lbs
12DCA-ES	Elbow Strap	\$171	5 lbs
12DCA-FS	Firestop	\$88	4 lbs
12DCA-IS	Attic Insulation Shield	\$652	5 lbs
12DCA-RRS	Roof Radiation Shield*	\$150	10 lbs
12DCA-SC	Storm Collar	\$56	5 lbs
12DCA-SS	Supplementary Support*	\$300	5 lbs
12DCA-ST	Stabilizer*	\$102	5 lbs
12DCA-VC1	Chimney Cap	\$466	18 lbs
12DCA-WS	Wall Strap*	\$178	5 lbs

16" Pipe & Acc.-For use w/ MFP63, MFPST43 & Custom Units (Resale Multiplier)

16DCA-16K	16 Foot Chimney Package	\$4,391	214 lbs
16DCA-24K	24 Foot Chimney Package	\$5,183	184 lbs
<i>*System height includes 5' for standard Mason-lite fireplace</i>			
-16 ft. system (2 x XXDCA-48, 1 x XXDCA-36), -APD, -IS, -RRS, -VC, -FS and -SC*			
-24 ft. system (4 x 12DCA-48, 1 x 12DCA-36), -APD, -IS, -RRS, -VC, -FS and -SC*			
16DCA-12	12" Chimney Pipe	\$197	12 lbs
16DCA-18	18" Chimney Pipe	\$244	13 lbs
16DCA-36	36" Chimney Pipe	\$381	28 lbs
16DCA-48	48" Chimney Pipe	\$396	31 lbs
16DCA-AP	Anchor Plate	\$540	17 lbs
16DCA-APD	Anchor Plate w/ Damper	\$918	26 lbs
16DCA-CTF	Chase Top Flashing*	\$660	15 lbs
16DCA-E15	15 Deg. Elbow	\$381	23 lbs
16DCA-E30	30 Deg. Elbow	\$381	23 lbs
16DCA-ES	Elbow Strap	\$179	5 lbs
16DCA-FS	Firestop	\$100	5 lbs
16DCA-IS	Attic Insulation Shield	\$685	12 lbs
16DCA-RRS	Roof Radiation Shield*	\$450	4 lbs
16DCA-SC	Storm Collar	\$60	3 lbs
16DCA-SS	Supplementary Support*	\$312	6 lbs
16DCA-ST	Stabilizer*	\$168	5 lbs
16DCA-VC1	Chimney Cap	\$625	24 lbs
16DCA-WS	Wall Strap*	\$273	7 lbs

14" Pipe & Acc. -For use w/ MFP49, MFP39-14, MFP44-14, & Custom Units (Resale

		RETAIL Price/Ea	Weight
14DCA-16K	16 Foot Chimney Package	\$3,747	184 lbs
14DCA-24K	24 Foot Chimney Package	\$4,476	235 lbs
<i>*System height includes 5' for standard Mason-lite fireplace</i>			
-16 ft. system (2 x XXDCA-48, 1 x XXDCA-36), -APD, -IS, -RRS, -VC, -FS and -SC*			
-24 ft. system (4 x XXDCA-48, 1 x XXDCA-36), -APD, -IS, -RRS, -VC, -FS and -SC*			
14DCA-12	12" Chimney Pipe	\$175	9 lbs
14DCA-18	18" Chimney Pipe	\$206	12 lbs
14DCA-36	36" Chimney Pipe	\$340	24 lbs
14DCA-48	48" Chimney Pipe	\$364	24 lbs
14DCA-AP	Anchor Plate	\$369	15 lbs
14DCA-APD	Anchor Plate w/ Damper	\$863	19 lbs
14DCA-CTF	Chase Top Flashing*	\$277	15 lbs
14DCA-E15	15 Deg. Elbow	\$348	19 lbs
14DCA-E30	30 Deg. Elbow	\$348	19 lbs
14DCA-ES	Elbow Strap	\$175	5 lbs
14DCA-FS	Firestop	\$96	1 lbs
14DCA-IS	Attic Insulation Shield	\$680	12 lbs
14DCA-RRS	Roof Radiation Shield*	\$95	4 lbs
14DCA-SC	Storm Collar	\$60	3 lbs
14DCA-SS	Supplementary Support*	\$181	6 lbs
14DCA-ST	Stabilizer*	\$84	3 lbs
14DCA-VC1	Chimney Cap	\$545	23 lbs
14DCA-WS	Wall Strap*	\$184	7 lbs

B-Vent Chimney System

10" Round Gas Vent (Resale Multiplier)

10BV12	12" Length Round Rigid Pipe	\$194	4 lbs
10BV18	18" Length Round Rigid Pipe	\$210	7 lbs
10BV24	24" Length Round Rigid Pipe	\$267	8 lbs
10BV36	36" Length Round Rigid Pipe	\$298	12 lbs
10BV18A	18" Length Adjustable Pipe	\$318	6 lbs
10BVFSP	Firestop Support Plate	\$157	5 lbs
10BVSC	Storm Collar	\$32	1 lbs
10BVVT	High-Wind Cap	\$338	7 lbs
MFP-10DH	10" Anch. Plate/Draft Hood	\$609	6 lbs

12" Round Gas Vent (Resale Multiplier)

12BV12	12" Length Round Rigid Pipe	\$242	5 lbs
12BV18	18" Length Round Rigid Pipe	\$274	8 lbs
12BV24	24" Length Round Rigid Pipe	\$242	10 lbs
12BV36	36" Length Round Rigid Pipe	\$416	12 lbs
12BV18A	18" Length Adjustable Pipe	\$323	8 lbs
12BVL45	45° Adj. Elbow (individually)	\$337	6 lbs
12BVFSP	Firestop Support Plate	\$216	7 lbs
12BVSC	Storm Collar	\$36	1 lbs
12BVVT	High-Wind Cap	\$476	8 lbs
MFP-12DH	12" Anch. Plate/Draft Hood	\$624	8 lbs

Enervex Fans & Accessories

Chimney Fans (Resale Multiplier)

		RETAIL	
EXH0022	RS 012 Fan & FSC5 Ctrl	\$3,929	37 lbs
EXH0023	RS 014 Fan & FSC5 Ctrl	\$4,224	47 lbs
EXH0024	RS 016 Fan & FSC5 Ctrl	\$6,132	61 lbs
EXHT0022	HTRS 012 Fan & FSC5 Ctrl	\$4,608	34 lbs
EXHT0023	HTRS 014 Fan & FSC5 Ctrl	\$4,949	42 lbs
EXHT0024	HTRS 016 Fan & FSC5 Ctrl	\$7,190	47 lbs



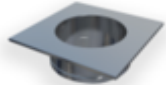
Chimney Fan Controls (Resale Multiplier)

EXH1126-5	FSC5, Fan Speed Control	\$104	3 lbs
ADC100	Universal Control	\$1,137	3 lbs
ADC150	Modulating Control	\$2,392	3 lbs



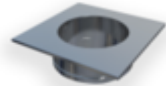
Chimney Fan Adapters for Air Cooled Pipe (Resale Multiplier)

FR3012A	12" Steel Chimney Adapter for RS 012 and RS 014 for Air Cooled Pipe	\$650	N/A
FR3014A	14" Steel Chimney Adapter for RS 012 and RS 014 for Air Cooled Pipe	\$650	N/A
FR3016A	16" Steel Chimney Adapter for RS 012 and RS 014 for Air Cooled Pipe	\$650	N/A
FR4012A	12" Steel Chimney Adapter for RS 016 for Air Cooled Pipe	\$650	N/A
FR4014A	14" Steel Chimney Adapter for RS 016 for Air Cooled Pipe	\$650	N/A
FR4016A	16" Steel Chimney Adapter for RS 016 for Air Cooled Pipe	\$650	N/A



Chimney Fan Adapters for Insulated Pipe (Resale Multiplier)

FR3012	12" Steel Chimney Adapter for RS 012 and RS 014 for Insulated Pipe	\$633	N/A
FR3014	14" Steel Chimney Adapter for RS 012 and RS 014 for Insulated Pipe	\$633	N/A
FR3016	16" Steel Chimney Adapter for RS 012 and RS 014 for Insulated Pipe	\$633	N/A
FR4012	12" Steel Chimney Adapter for RS 016 for Insulated Pipe	\$633	N/A
FR4014	14" Steel Chimney Adapter for RS 016 for Insulated Pipe	\$633	N/A
FR4016	16" Steel Chimney Adapter for RS 016 for Insulated Pipe	\$651	N/A



Mechanical Fireplace Damper (Used with ADC100 or ADC150)(Gas Burning Only) (Resale Multiplier)

EXH2810-24	10" MFD for RS 09 and RS 012 24V	\$2,772	N/A
EXH2810-120	10" MFD for RS 09 and RS 012 120V	\$2,772	N/A
EXH2812-24	12" MFD for RS 09 and RS 012 24V	\$2,960	N/A
EXH2812-120	12" MFD for RS 09 and RS 012 120V	\$2,960	N/A
EXH2910-24	10" MFD for RS 014 and RS 016 24V	\$2,960	N/A
EXH2910-120	10" MFD for RS 014 and RS 016 120V	\$2,960	N/A
EXH2912-24	12" MFD for RS 014 and RS 016 24V	\$3,162	N/A
EXH2912-120	12" MFD for RS 014 and RS 016 120V	\$3,162	N/A
EXH2914-24	14" MFD for RS 014 and RS 016 24V	\$3,269	N/A
EXH2914-120	14" MFD for RS 014 and RS 016 120V	\$3,269	N/A
EXH2916-24	16" MFD for RS 014 and RS 016 24V	\$3,602	N/A
EXH2916-120	16" MFD for RS 014 and RS 016 120V	\$3,602	N/A



Slip Ring For MFD Using Air Cooled Pipe (Resale Multiplier)

ENE2930	10" Slip Ring For Air Cooled Chimney using Mech. Fireplace Dampers	\$668	N/A
ENE2932	12" Slip Ring For Air Cooled Chimney using Mech. Fireplace Dampers	\$668	N/A
ENE2934	14" Slip Ring For Air Cooled Chimney using Mech. Fireplace Dampers	\$668	N/A
ENE2936	16" Slip Ring For Air Cooled Chimney using Mech. Fireplace Dampers	\$668	N/A

KW Fans & Accessories

Chimney Fans (Resale Multiplier)

		RETAIL	
RSD150	RSD150 Fan & FSC.00 Fan Speed control	\$3,954	37 lbs
RSD250	RSD250 Fan & FSC.00 Fan Speed control	\$4,446	47 lbs
RSD350	RSD350 Fan & FSC.00 Fan Speed control	\$5,920	61 lbs



Chimney Fan Controls (Resale Multiplier)

FSC.00	Rheostat Fan Speed Controller for RSD fan	\$86	3 lbs
FSC.100.1	Quiet RSD Fan Control Package - Solid Fuel Only (Includes VMC Motor Drive with Wall Plate Potentiometer)	\$834	3 lbs
FSC.200.1	Better RSD Fan Control Package - Solid Fuel Only (Includes MUC, VMC & CS75)	\$1,120	3 lbs
FSC.250.1	Standard RSD Fan Control Package - Gas Only (Includes MUC, VMC, GFS, Vent Probe & Tubing)	\$1,223	3 lbs
FSC.350.1	Better RSD Fan Control Package for - Gas Only (Includes H100, VMC, LP5 pressure transducer, Vent Probe & Tubing)	\$2,229	3 lbs



Chimney Fan Adapters for Masonry Chimney (Resale Multiplier)

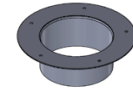
MFA250	Masonry Fan Adapter for RSD150/250	\$400	N/A
MFA250	Masonry Fan Adapter for RSD350	\$543	N/A

Chimney Fan Vibration Dampner (Resale Multiplier)

FVD250	Fan Vibration Dampner for RSD150/250	\$629	N/A
FVD350	Fan Vibration Dampner for RSD350	\$771	N/A

Chimney Fan Adapters for Metal Chimney (Resale Multiplier)

RFA.210	10" Fan adaptor for RSD250	\$583	N/A
RFA.212	12" Fan adaptor for RSD250	\$583	N/A
RFA.214	14" Fan adaptor for RSD250	\$617	N/A
RFA.310	10" Fan adaptor for RSD350	\$617	N/A
RFA.312	12" Fan adaptor for RSD350	\$617	N/A
RFA.314	14" Fan adaptor for RSD350	\$674	N/A
RFA.316	16" Fan adaptor for RSD350	\$674	N/A



Chimney Fan Silencer (Gas Burning Only) (Resale Multiplier)

AGM1120/250	10" Diameter AGM Passive Silencer (Gas Only)	\$3,371	N/A
AGM1120/300	12" Diameter AGM Passive Silencer (Gas Only)	\$3,543	N/A



Mechanical Fireplace Damper (Used with FSC250.1 or FSC350.1)(Gas Burning Only) (Resale Multiplier)

GFD.210	10" Gas flue damper+adaptor for 250 + actuator	\$1,486	N/A
GFD.212	12" Gas flue damper+adaptor for 250 + actuator	\$1,543	N/A
GFD.214	14" Gas flue damper+adaptor for 250 + actuator	\$1,669	N/A
GFD.312	12" Gas flue damper+adaptor for 350 + actuator	\$1,543	N/A
GFD.314	14" Gas flue damper+adaptor for 350 + actuator	\$1,669	N/A
GFD.316	16" Gas flue damper+adaptor for 350 + actuator	\$1,851	N/A

